

MPPT SCC firmware upgrade SOP

Step 1: Connect the unit and the PC by a RS232 to RJ45 cable



Figure 1

Step 2: Connect the DC power or battery (must be more than start up voltage, i.e. >23V for 24Vdc model and >46V for 48Vdc model) to the battery connector

Step 3: Connect the PV power to the PV connector, switch on the unit, then wait until the PV icon on LCD displays



Figure 2

Suggestion: PV voltage is 5V larger than battery voltage

Step 4: check COM port number you are using in Computer management >> Device manage >> Ports(COM & Port).

Note: Make sure all application communication software using this COM port is closed. The application software include some UPS monitoring software

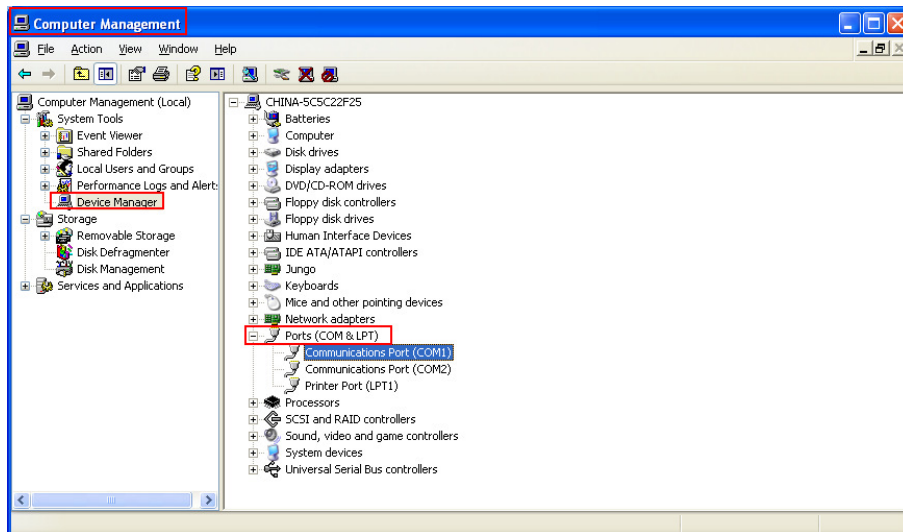


Figure 3

Step 5: Execute MpptReflashTool.exe.

Step 6: Click interface check box to select the right COM port.

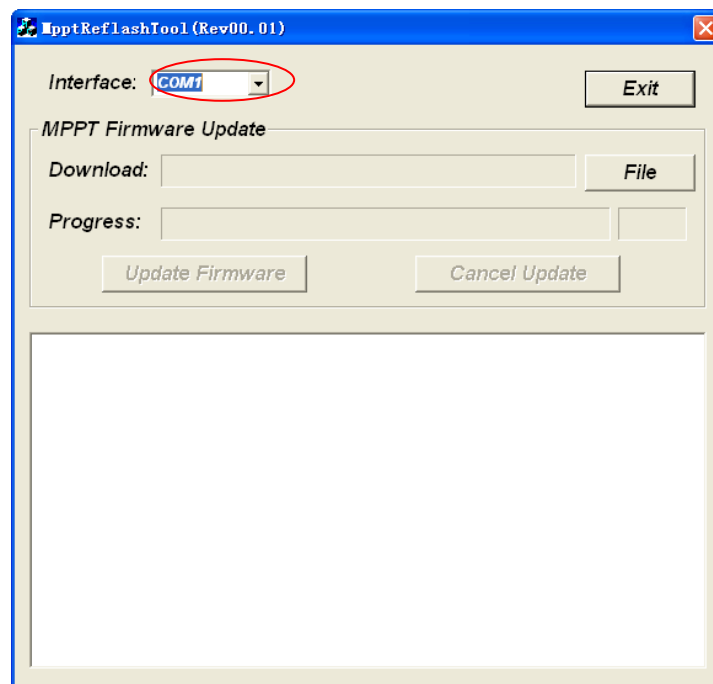


Figure 4

Step 12: Click **File** button.

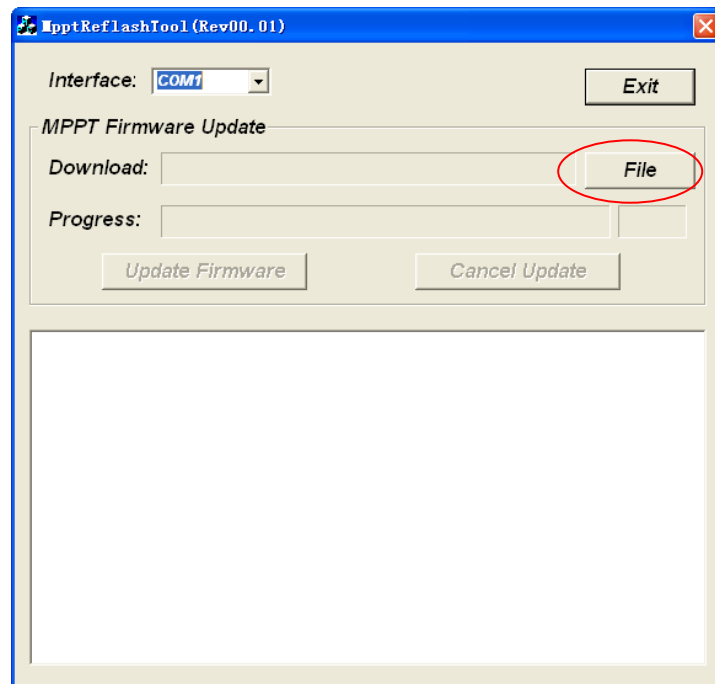


Figure 5

Select the firmware file, by double clicking it.

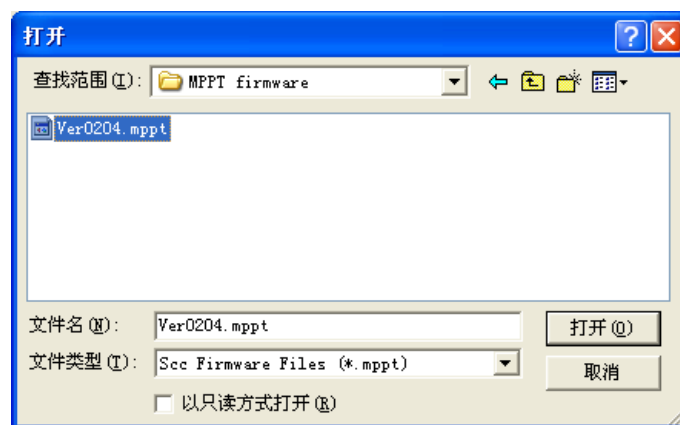


Figure 6

Step 13: Click **Update Firmware** button to update MPPT SCC firmware.

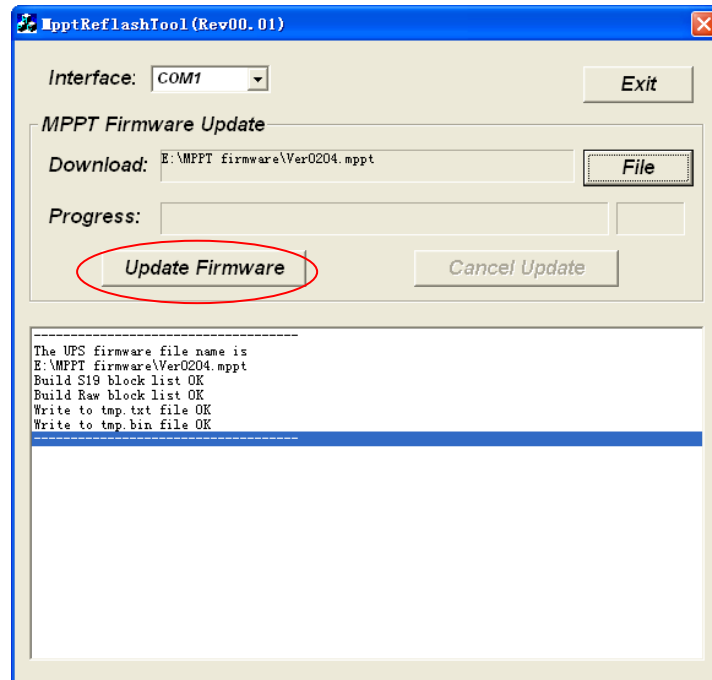
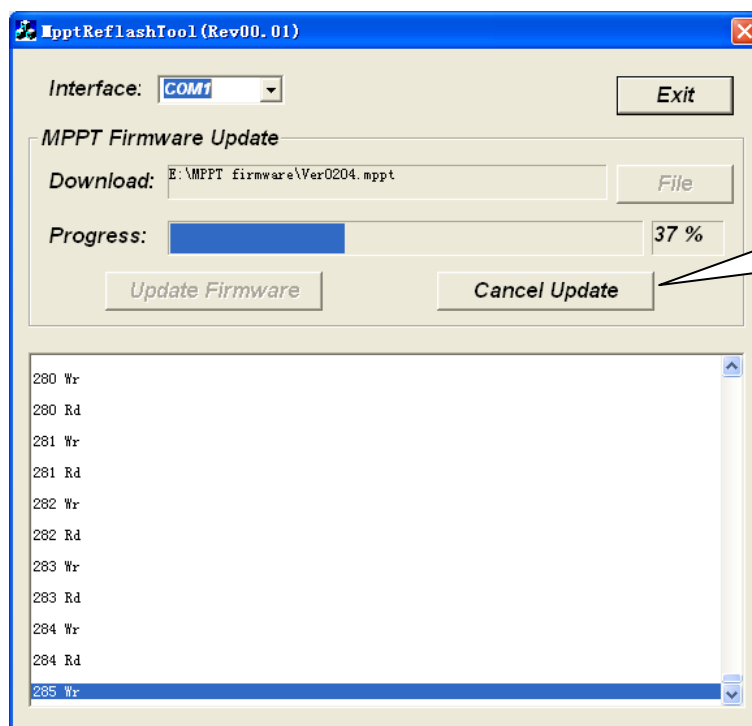


Figure 7



Do not press this button.

Figure 8

Step 14: When the processing bar is up to 100%, below dialog will pop-up to remind you the programming is successful! Now the software of the MPPT SCC is updated completely!

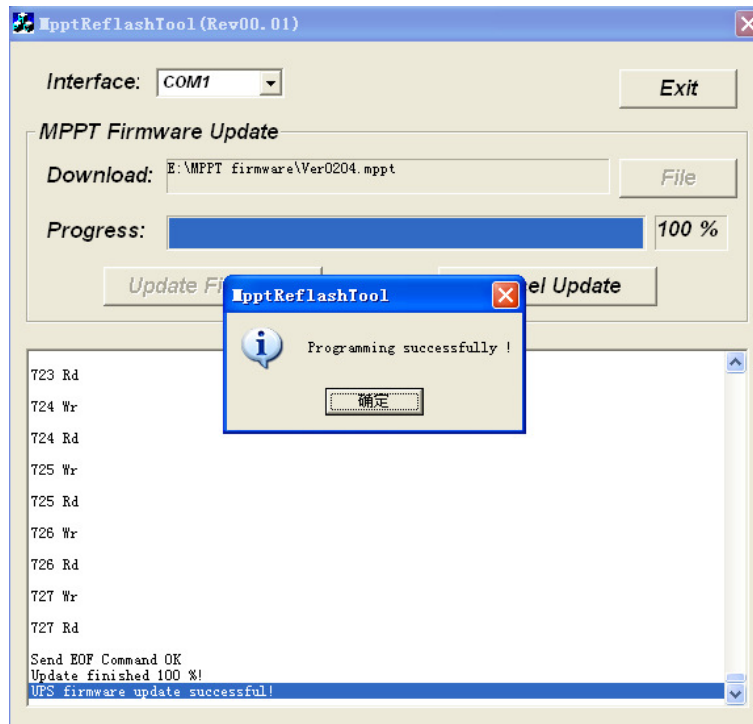


Figure 9

Now the MPPT SCC firmware is updated completely!