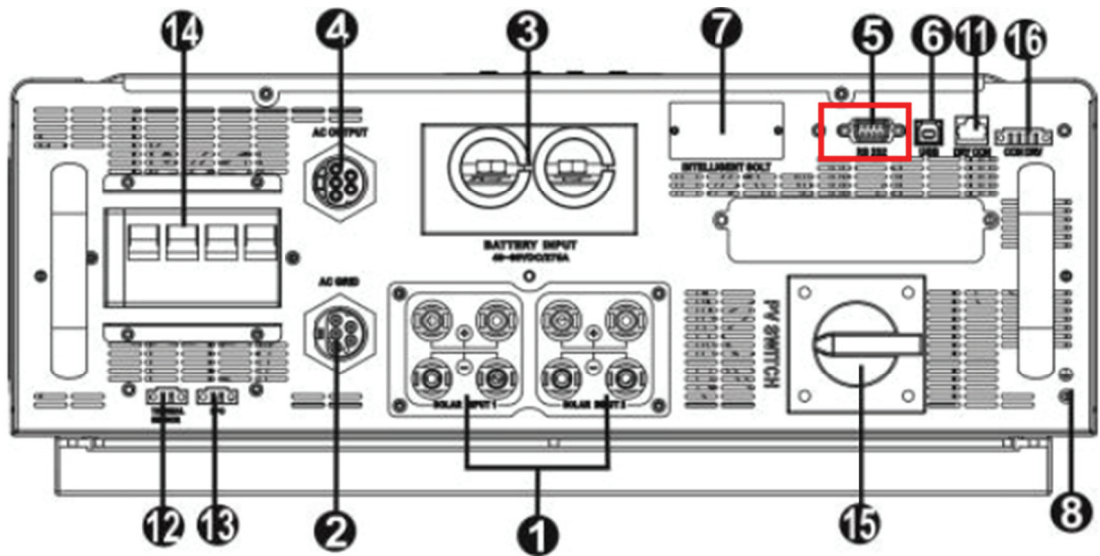


# Infini-Solar 10KW upgraded Firmware SOP

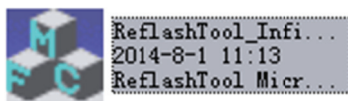
1. Make sure all of software is close, such as SolarPower.
2. Startup Infini-Solar 10KW and use RS232 cable connect between PC and the com port of Infini-Solar 10KW which show as below.

At this step, LCD should be light.

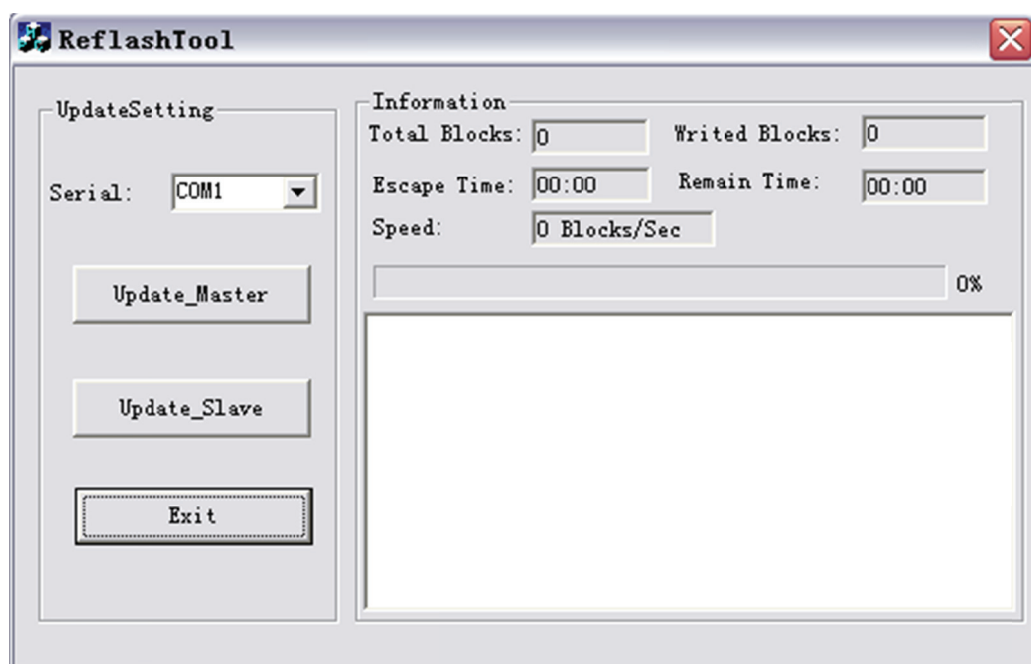


3. Decompress the package of upgraded tool and startup

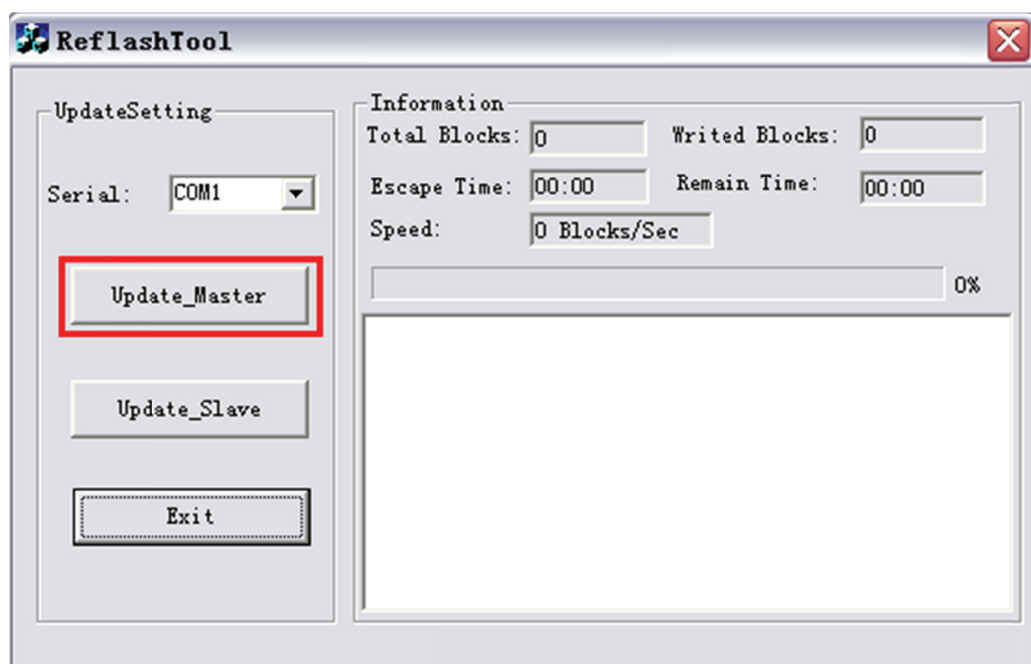
"ReflashTool\_Infini10KW.exe".

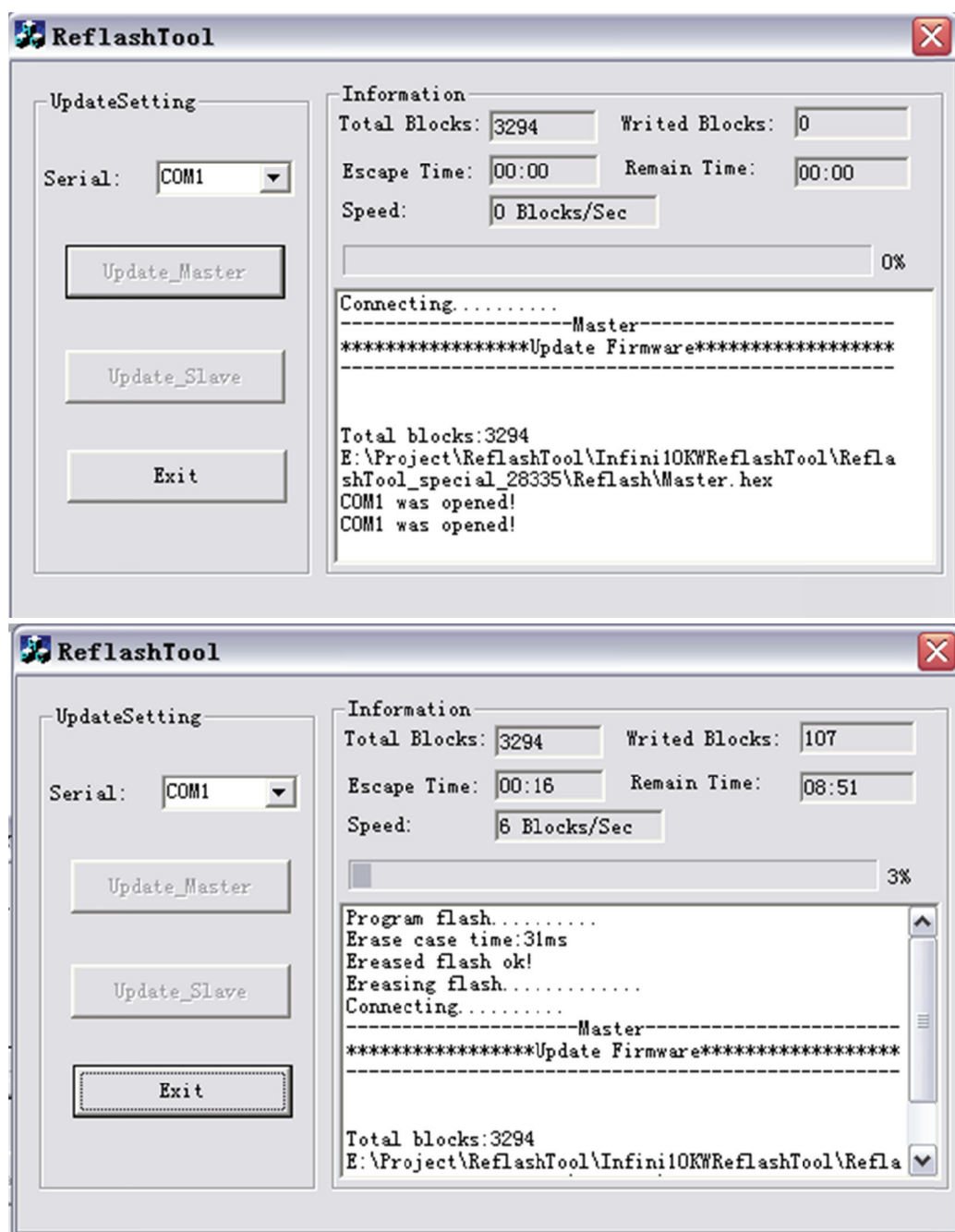


4. The system will show a dialog as below.

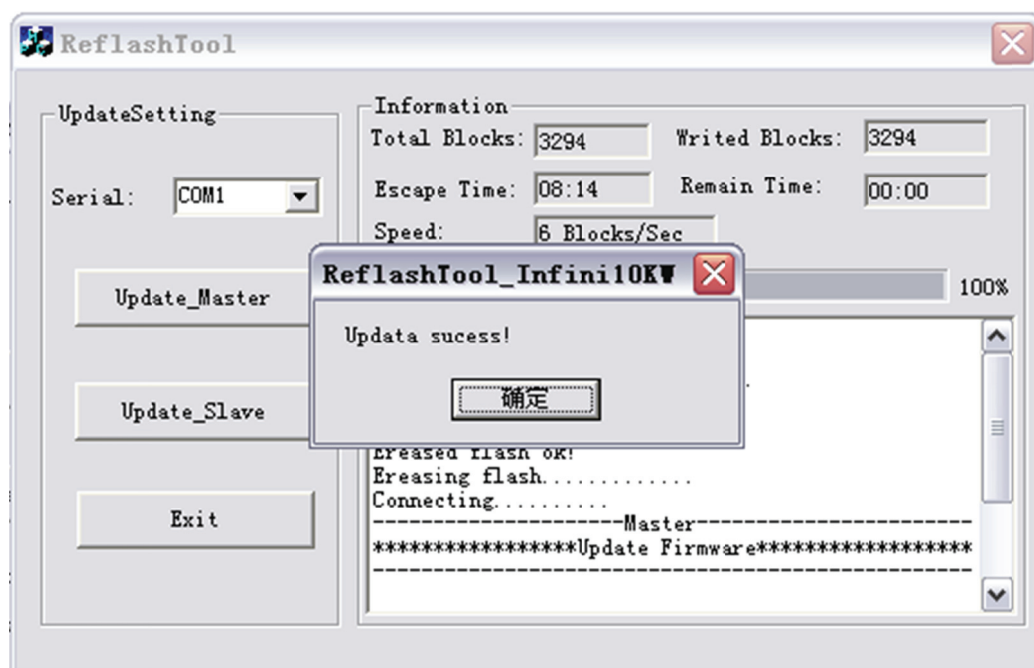


5. Press "Update\_Master" button, upgrading will be started.

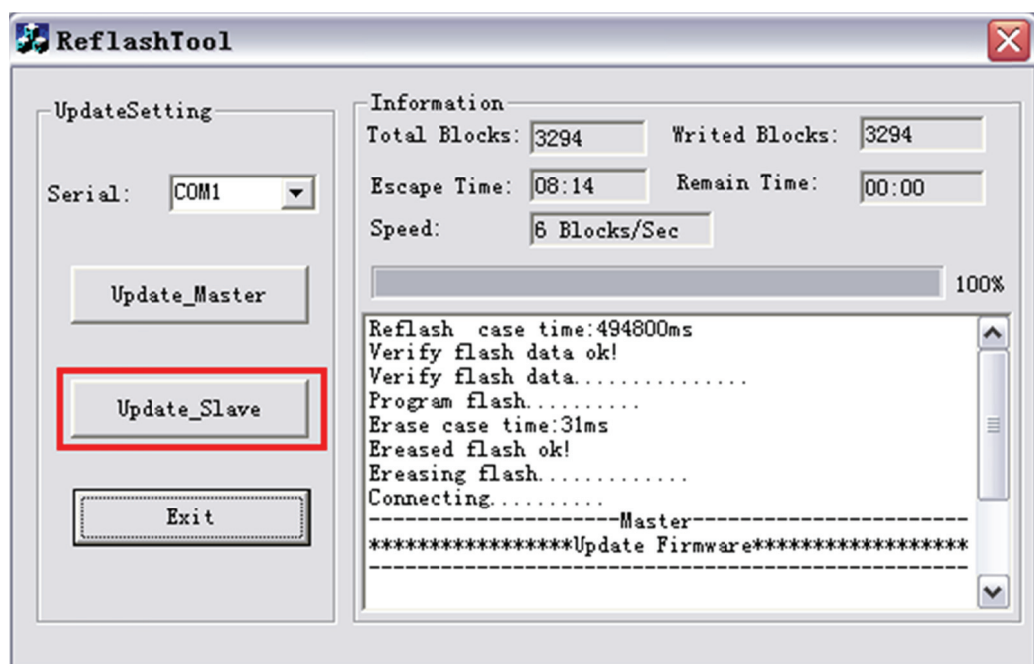




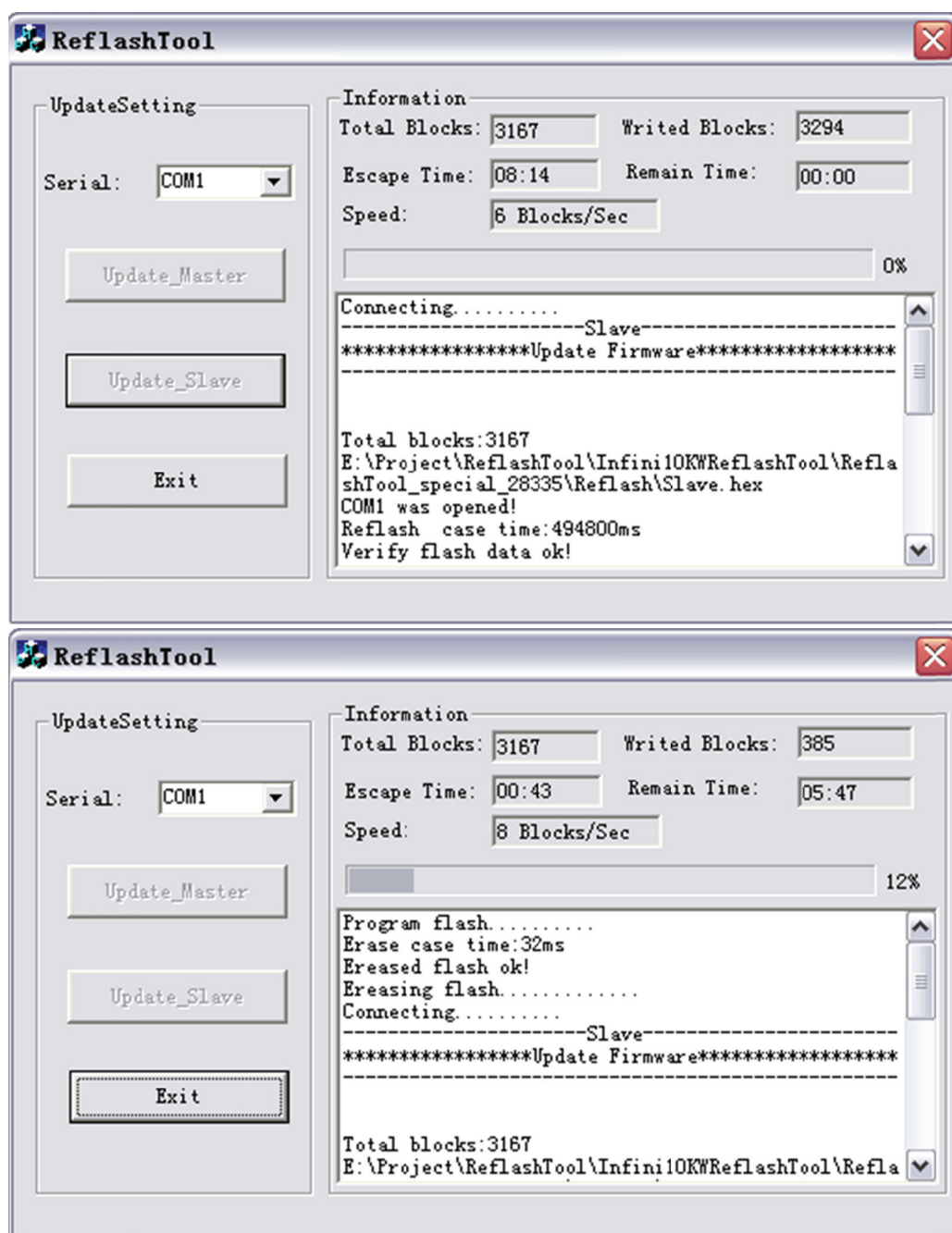
6. After few minutes, the process will be finished.



7. After 1 minute, press “Update\_Slave” button to upgrade another CPU.



8. The process will be started.



9. After few minutes, the process will be finished. At this time, the whole process is finished completely.

